



Maestro for SE™

Maestro for SecurityExpressions

Installation Guide

COPYRIGHT

© 2005 Reqa Inc. All Rights Reserved. The contents of this document are considered proprietary by Reqa, Inc. The information enclosed and any portion thereof may not be utilized for any purpose other than the consideration of Reqa, Inc. Information in this manual is subject to change without notice and represents no commitment on the part of Reqa, Inc.

LICENSE AGREEMENT

PLEASE READ THE APPROPRIATE LEGAL AGREEMENT CORRESPONDING TO THE LICENSE YOU PURCHASED, WHICH SETS FORTH THE GENERAL TERMS AND CONDITIONS FOR THE USE OF THE LICENSED SOFTWARE. IF YOU DO NOT KNOW WHICH TYPE OF LICENSE YOU HAVE ACQUIRED, PLEASE CONTACT licensing@reqa.com.

THE USER MAY NOT RENT, LEASE, SUBLICENSE, TRANSLATE, DISASSEMBLE, REVERSE ENGINEER, OR DE-COMPILE THE SOFTWARE, OR MODIFY OR MERGE THE SOFTWARE WITH ANY PART OF THE SOFTWARE IN ANOTHER PROGRAM. THIS LICENSE MAY NOT BE ASSIGNED OR OTHERWISE TRANSFERRED WITHOUT THE PRIOR WRITTEN CONSENT OF REQA INC.

THIS LICENSE IS THE ENTIRE AGREEMENT BETWEEN REQA INC. AND THE USER, AND SUPERSEDES ANY OTHER AGREEMENT, ORAL OR WRITTEN, AND MAY NOT BE CHANGED EXCEPT BY A WRITTEN SIGNED AGREEMENT. IF YOU DO NOT AGREE TO ALL OF THE TERMS SET FORTH IN THE AGREEMENT, DO NOT INSTALL THE SOFTWARE.

Contents

| | |
|--------------------------------------|---|
| Contents..... | 3 |
| Preface..... | 4 |
| Software Requirements..... | 4 |
| Installation of Maestro for SE | 5 |
| Starting Maestro for SE | 8 |
| Uninstall of Maestro for SE..... | 9 |

Preface

This Installation Guide introduces Reqo Inc. Maestro for SE™ software, and provides the following information:

- Hardware and database software requirements
- Instructions for installing software
- Instructions for uninstalling the software

Throughout this document Pedestal SecurityExpressions™ software will be referred to as SecurityExpressions and/or SE.

AUDIENCE

This information is designed for network administrators as a guide in the installation process.

Software Requirements

Before you begin the installation, verify that the minimum system requirements are met for all computers being used as Maestro for SE servers and for the Maestro for SE database. The requirements for Maestro for SE are outlined below.

SE REQUIREMENTS

- Pedestal SecurityExpressions™ software version 3.2.1 (Build 3665)

MAESTRO FOR SE DATABASE REQUIREMENTS

- Maestro for SE database must reside on the same server and instance as the SE database
- Please refer to SE documentation for detailed server and database system requirements
- Allocate approximately 5% of total disk space used by SE database for Maestro for SE database
- Microsoft SQL Server 2000 Standard or Enterprise Edition with Service Pack 3a or higher

MAESTRO FOR SE WEB APPLICATION AND SERVICE

- Microsoft .NET Framework version 1.1 or higher
 - i* .NET Framework can be installed via Windows Update page <http://windowsupdate.microsoft.com>. For more information please refer to .NET Framework homepage <http://www.microsoft.com/net>
- Microsoft Internet Information Services (IIS) version 5.0 or higher
 - For more information about installation and configuration of Microsoft Internet Information Services please refer to your windows documentation.
 - ASP.NET support is required.
 - Under **Windows 2000 or Windows XP** if IIS installed after **.NET Framework** you will need to enable IIS mappings for ASP.NET. For more information please refer to **KB0011** in **Troubleshooting Installation of Maestro for ePO** section at the end of this document
 - Under **Windows 2003 Server** during installation of **IIS** please make sure to enable **ASP.NET** support. For more information please refer to the Official Microsoft ASP.NET Site: Running ASP.NET 1.1 with IIS 6.0 <http://www.asp.net/faq/AspNetAndIIS6.aspx>
- Microsoft Office XP Web Components
 - Office XP Web Components can be downloaded <http://office.microsoft.com/downloads/2002/owc10.aspx>
- Microsoft Data Access Components (MDAC) 2.8
 - For information about downloading MDAC releases, see the following MSDN Web site: <http://msdn.microsoft.com/data/downloads/updates/default.aspx>
- Free disk space - 50Mb minimum

CLIENT REQUIREMENTS

- Microsoft Internet Explorer version 5.0 or higher
 - i* Microsoft Internet Explorer can be installed via Windows Update page <http://windowsupdate.microsoft.com>. For more information please refer to Internet Explorer homepage <http://www.microsoft.com/ie>

Installation of Maestro for SE

INSTALLATION PROCEDURE

1. From the server where the SecurityExpressions application is installed, begin installation by launching the **Maestro4SE.msi** file. The Maestro for SE Installation dialog box appears. Select **Next** button to proceed with the install.



Figure 1: Maestro for SE Installation dialog box

2. Accept default application options and choose the **Next** button to proceed with the install.

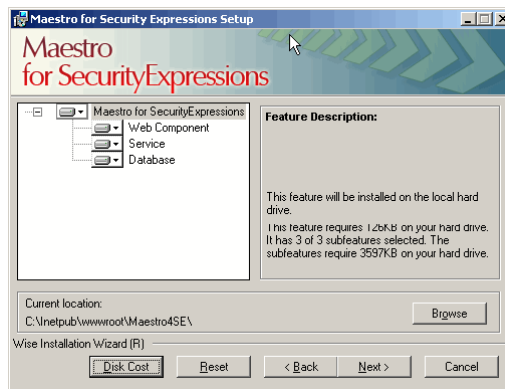


Figure 2: Application components screen

3. Specify the name of the SQL server that houses the SecurityExpressions database, the name of the SecurityExpressions database and the SQL authentication information.



Figure 3: SecurityExpressions database information

4. Specify the name of the Maestro for SE database that will be created on the same instance of SQL that houses your SecurityExpressions database and the SQL username and password that will be created and used by the Maestro for SE application.



Figure 4: Maestro for SE database information

5. Enter the SecurityExpressions credentials to unlock credential store that is used to authenticate during audit of targeted computers.



Figure 5: SecurityExpressions credentials

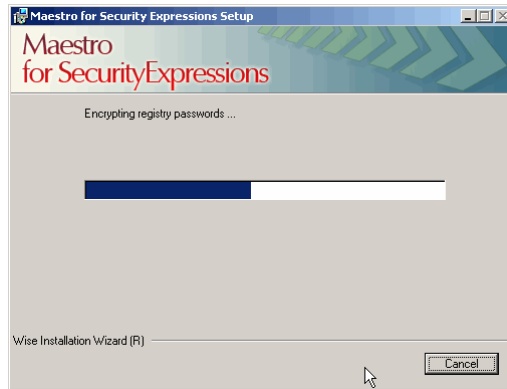


Figure 6: Maestro for SE installation progress dialog box

6. Upon successful installation click the finish button to exit the installation program **Close**.



Figure 7: Maestro for SE installation successful dialog box

7. Maestro for SE uses the Maestro for ePO user management module; therefore the Maestro for SE security patch needs to be applied to enable SE specific rights management.
 - a. On the server where Maestro for ePO web component is installed, select **Patch Tool** from the **Maestro for ePO** Program group from the Start menu.
 - b. Browse to Maestro for SE installation files and select **Patch_SecurityExpressions.bin** patch file.
8. Only if Maestro for ePO is not installed on the same server as Maestro for SE will you need to export Maestro for ePO registry values from system where Maestro for ePO is installed.
 - a. On the system where Maestro for ePO is installed Click **Start**, and then click **Run**.
 - b. In the Open box, type **regedit**, and then click **OK**.
 - c. Locate and then click the key **HKEY_LOCAL_MACHINE\SOFTWARE\Rego\Maestro**
 - d. Right click and choose Export.

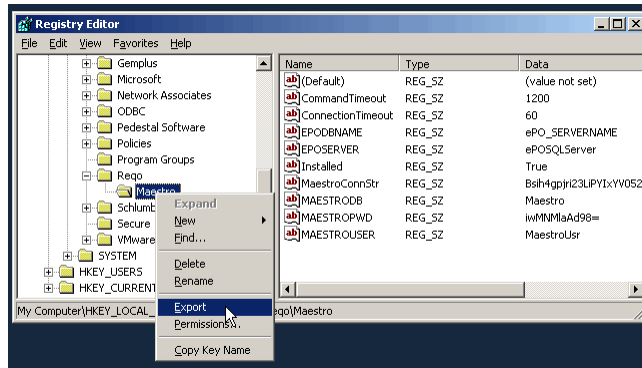


Figure 8: Exporting Maestro for ePO registry values

- e. In the Save in box, select a location where you want to save the Registration Entries (.reg).
- f. In the File name box, type a file name **Maestroforepo.reg**, and then click Save.
- g. Copy **Maestroforepo.reg** file to the system where Maestro for SE is installed
- h. Double-click the **Maestroforepo.reg** file to merge Maestro registry values into the registry.

Starting Maestro for SE

Once installation of the software is completed successfully, follow these steps to start using Maestro for SE:

1. Using Microsoft Internet Explorer 5.0 or higher navigate to http://<Maestro_for_System_Name>/maestro4se
2. To be able to login into the application you will need to use your Maestro for ePO Administrative account or grant Maestro for ePO user Maestro for SE application login rights.



Figure 9: Maestro for SE Login page

Uninstall of Maestro for SE

To uninstall Maestro for ePO:

- STEP 1** Go to Windows Control Panel select Add/Remove Programs and find the Maestro for SecurityExpressions applications and click on **Remove** button to uninstall the application.

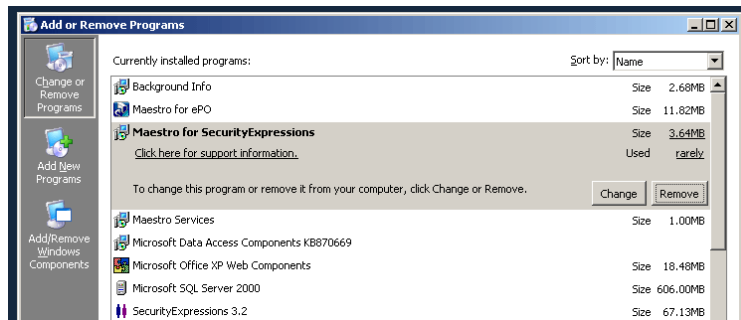


Figure 10: Uninstall of Maestro for ePO

- STEP 2** In SQL Enterprise Manager locate Maestro4SE database. Highlight Maestro database, right click to choose option to **Delete** database.